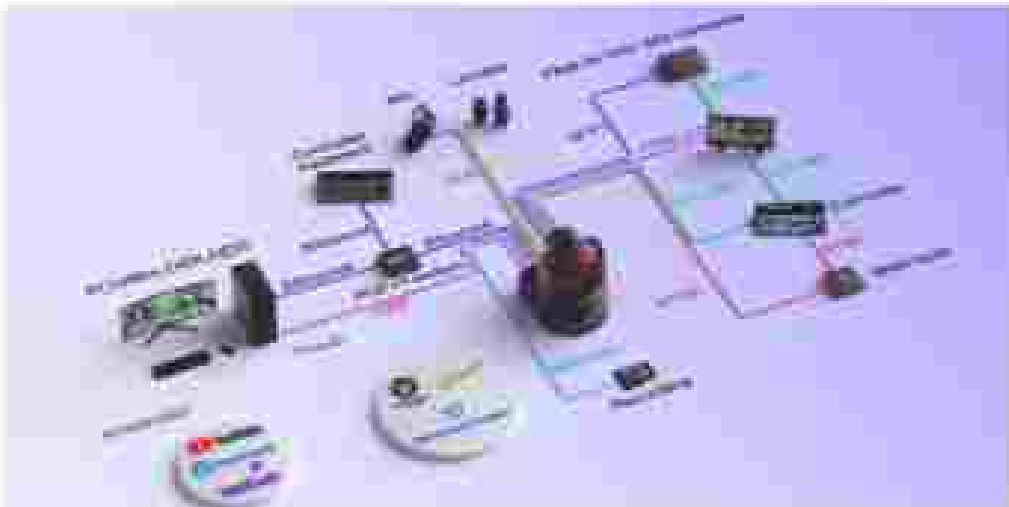




Broadcast Level PTZ Camera Disrupts AV Industry

30X | 4K | AUTO-TRACKING
FREED | GENLOCK

SFP+ / 12G-SDI / HDMI / NDI* / NDI*HX / XLR



High-Performance Sensor and Image Processor

The Explore SE boasts a Sony 1/1.8-inch 9MP CMOS sensor and a state-of-the-art image processor, to deliver stunning UHD images that capture realistic colors and maintain rapid focus.



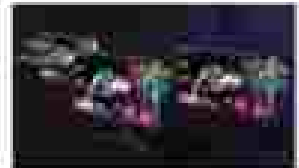
Versatile Output Options

The Explore SE offers diverse output options, ensuring 4K60p output through NDI*, NDI*HX, 12G-SDI, HDMI, and SFP+—it provides great flexibility and compatibility to Telestream users.



Genlock Functionality

The Explore SE features Genlock for better synchronization. This allows it to function as the main camera, sporting precise video synchronization with sub-cameras in broadcasting and live streaming setups.



Robust Audio Capabilities

The Explore SE features 5.5-inch (1/8-in) and Mini XLR with Attention power, providing compatibility with various microphones and audio equipment.



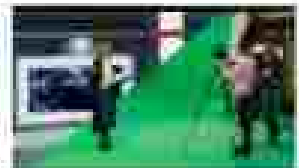
Native AI-Based Auto-Tracking

The Explore SE features AI-based auto-tracking, automatically following subjects to enhance ease of use and capture the moments fearlessly.



FreeD Technology Integration

The Explore SE integrates FreeD technology for versatile shooting angles, ideal for both real-world and virtual applications.



MicroSD Card Slots

MicroSD card slots—one for firmware updates and the other for local recording. Record directly into the camera for instant backup during network issues or quick access, ideal for prompt event capture.



Specifications

Camera	Extrinsc
Part No:	TLC-900-P-30-4K(NC)-AE
Sensor	1/1.8 inch, 8MP, 1/4" CMOS sensor
Zoom	30x optical zoom
Lens	M8.95-154.64mm, F1.33-F1.8
Horizontal View Angle	87°(Wide)-2°(Tele)
Vertical Viewing Angle	34.14°-11.7°
Elongation Viewing Angle	87.88°-1.27°
Minimum Working Distance	Wide: 30cm, Tele: 130cm
E/N Ratio	450dB
Video Format	<p>1080P 3840*2160P60/50/30/25/24/23.98/24/23.97/24/23.98 1920*1080P60/50/30/25/24/23.97/24/23.98 1920*1080P30/25/24/23.98, 1280*720P60/50/30/25/24/23.97</p> <p>30-60i 1920*1080P60/50/30/25/24/23.97/24/23.98 1920*1080P30/25/24/23.98, 1280*720P60/50/30/25/24/23.97/24/23.98</p> <p>HDMI 0 3840*2160P60/50/30/25/24/23.97/24/23.98 1920*1080P60/50/30/25/24/23.97/24/23.98 1920*1080P30/25/24/23.98, 1280*720P60/50/30/25/24/23.97</p> <p>NDI® / NDI™-X Main Stream: 3840*2160P15-60, 1920*1080P15-60 1280*720P15-60, 1024*576P15-30 Sub Stream: 640*360P15-30</p> <p>30P 3840*2160P60/50/30/25/24/23.97/24/23.98 1920*1080P60/50/30/25/24/23.97/24/23.98 1920*1080P30/25/24/23.98, 1280*720P60/50/30/25/24/23.97</p> <p>USB Type-C H.265: 1920*1080P5, 1280*720P15, 1024*576P15, 800*448P30 H.264: 1920*1080P5, 1280*720P15, 1024*576P15, 800*448P30 MJPEG: 3840*2160P30, 1920*1080P60, 1280*720P60, 1024*576P60, 800*448P60 H264(H265): 3840*2160P30, 1920*1080P60, 1280*720P60, 1024*576P60, 800*448P60</p>
Image Parameters	
Noise Reduction	1083D
Minimum IIR	0.3 (wide) 0.66 (Max AGC, 1/30, F1.3)
White Balance	Auto/Manual/ATW/Push/Indoor/Outdoor/Color Temperature
Exposure	Auto/Manual/Exposure Priority/ISO Priority/Brightness Priority
Anti-Flicker	OFF, 50Hz, 60Hz
Image File/Formatting	Supported
Focus/iris/Electronic Shutter	Auto/Manual
Gamma	Supported
Spotlight Compensation	Supported

IP Streaming	
Video Encoding	H.264/H.265
Bitrate Control	Variable Bitrate (VBR), Constant Bitrate (CBR)
Bitrate Range	1024Kbps-128000Kbps
Network Port Speed	1000M
Protocol	NDI®, NDI™-X, RTSP, HTTP, RTMP, RTMPE, Onvif, YISCA over IP/RTSP&ONVIF, YISCA, PELCO-T/D, SSOP, FreeD, NTP, RTP Multicast, WebRTC
Pan/Tilt Movement	
Preset	Remote controller, IR, Serial port, 256 Accuracy, 0.1°
Pan Rotation Angle	-120°~+120°
Tilt Rotation Angle	-90°~+90°
Pan Rotation Speed	0.1°~80°/s
Tilt Rotation Speed	0.1°~80°/s
I/O Interface	
Control Port	RS232, RS485, RS-422, RJ45, USB, NDI™-X
Video Port	NDI®, NDI™-X, HDMI 2.0, 1080P, 30-60i, 60FPS, USB Type-C
Audio Port	5mm 1LR (with phantom power), stereo 3.5mm TRS In
Tally	Supported
POE+	Supported
Serial Chain	Supported
General	
Input Voltage	DC12V, POE+ (IEEE802.3bt)
Operating Temperature	-10°C~50°C
Operating Humidity	45RH
Dimension (L*W*H)	111.5mm*68mm*68mm
Net Weight	4.8kg (4.5LB)
Color	Black/White

